

international@itchen.ac.uk

International P R O S P E C T U S



 **ITCHEN**
SIXTH FORM
COLLEGE



Welcome



We pride ourselves on having over 25 years of experience welcoming international students.

At Itchen, you will meet our dedicated team of deeply committed teachers, tutors, support staff and homestay families, all ready to assist you in achieving academic success, social growth and build positive relationships.

Itchen has a special atmosphere which you will experience as soon as you walk through the door. We truly care about all our students, we go the extra mile to make sure you succeed to the best of your ability and have an enjoyable experience.

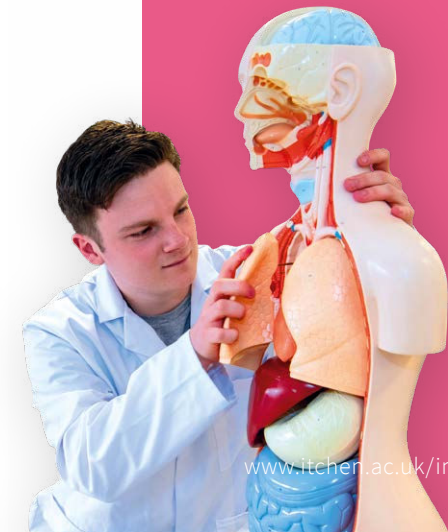
Itchen offers international students high quality academic programmes and a wide range of enrichment opportunities to encourage intellectual curiosity and develop independence. We are a college that is embedded in its local community, with a national reputation for our sporting prowess and an international reputation for our commitment to provide a warm environment to learn and flourish.

We look forward to welcoming you to Itchen Sixth Form College.

Alex Scott
Principal

Contents

10 Reasons to Study at Itchen	4
Student Success	5
Location	6-7
Facilities	8-9
High School Programme	10-11
A Level Courses	12-13
Level 3 Vocational Courses	14-15
+ Supplementary Courses	16-17
English as a Foreign Language	18
Study Tours	19
Our Academies	20-21
Support	22
Home Stay Families	23
Enrichment	24
Application Timeline	25
International Success	26-27



“Itchen College has taught us so much and supported us in so many ways. One thing we will forever be grateful for, is having had the chance to meet one another during our time in Southampton. We never know what the future will hold for each one of us, but one thing is sure: The friendship we found at Itchen is one that will last for a lifetime.”

Tatjana, Brazil

10 Reasons to Study at Itchen

Tried and trusted

1 We have over 25 years experience of ensuring international students meet their personal and academic goals.

2 Many of our students come to study here because friends and family have recommended Itchen.

Student success

3 Our teachers, some of whom are examiners in their subjects, are dedicated to ensuring the success of our international students by supporting and guiding them.

4 Every year our international students progress to the university of their choice.

Support

5 We look after your welfare and support you academically and practically from the moment you apply as you build the study and life skills essential for university and career success.

Course choice

6 With many different courses, including A Levels, BTECs, CTECs preparation and other English language courses, we will have the course to suit you.

Location

7 The historic maritime city of Southampton is a lively and safe place to study. Located on the south coast of England, we are just over an hour away from London.

Enrichment

8 Our students get to know each other and the UK with a full programme of cultural trips and social activities.

9 There are many opportunities for students to get involved with wider college life and participate in music and drama, or receive international-level coaching in our Academy of Sport.

Community

10 Our international students are fully integrated into the college. They study with our British students and live with local families in the wider community.

Student Voices



Alexandre Moxhet, Belgium

• **Subjects:** Dance and Musical Theatre Production and Performing Arts, Performing Arts-National Certificate, English and Maths GCSE

"I came to England to make my dream come true: studying Musical Theatre in an English speaking country and I did! I loved all the courses I have followed here. I learned so much about myself, others, and the world that surrounds me. This experience has definitely changed my life."



Maud Oster, Germany

• **Subjects:** Fine Art A Level, Biology A level, Criminology, GCSE Maths, ESOL

"Southampton is a good city to stay in because it not only has the city centre and many nice restaurants, but it is also close to many other beautiful places such as Bath, Brighton, Bristol, London. I think my favourite thing to do was to take the train to a new city and explore it. Overall, I am pleased with my stay, I have met so many interesting people and I am glad that I now have friends all over Europe. I am satisfied with my English, as I think I speak much more fluently than before."



Samuele Caniglia, Italy

• **Subjects:** Biology A Level, Maths A level, Geography A Level, ESOL

"This exchange year is the best thing that could have ever happened in my life. I met people from around the whole world, everyone with different stories and different things to teach me. I made so many friends for life, which is the best part of this experience in my opinion. Enjoy every single moment: you won't regret it!"

Location

The city of Southampton on the beautiful south coast offers rich history, cultural spaces such as museums and theatres, and sporting opportunities: Southampton is home to Southampton 'Saints' Football Club and is also a world-renowned sailing location.

The city offers great shopping experiences and is one of the greenest cities in southern England.

Itchen Sixth Form College is only a few minutes away from local trains, buses and Southampton Airport. London is just 70 minutes by train and Heathrow Airport is only 70 minutes by road.



The River Itchen in Southampton



Bath



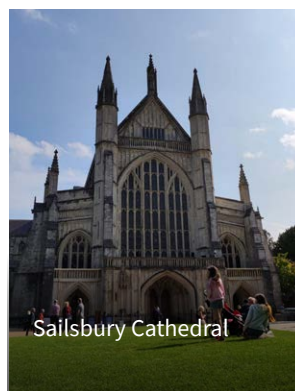
Windsor Castle, London



Tower Bridge



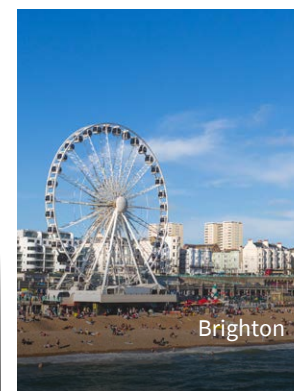
Stonehenge



Salisbury Cathedral



Harry Potter



Brighton



Itchen Sixth Form College



13 mins

TO SOUTHAMPTON TRAIN STATION BY TAXI



26 mins

TO NEW FOREST NATIONAL PARK BY CAR



30 mins

TO THE TITANIC MUSEUM



35 mins

TO BOURNEMOUTH BEACH BY TRAIN



70 mins

HEATHROW AIRPORT BY ROAD



80 mins

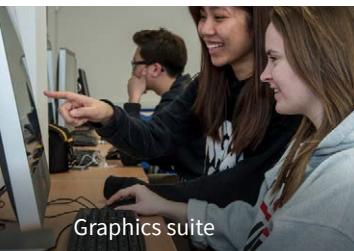
TO LONDON BY TRAIN

Facilities

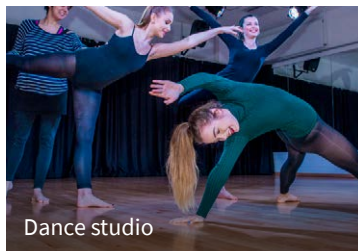
With Itchen's state-of-the-art facilities, you can enjoy top class resources and services for the best learning experience.



Outside social areas



Graphics suite



Dance studio



Textiles studio



Bespoke art rooms



Drama studio



Photography studio



Photography darkroom



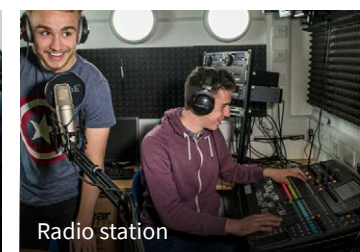
Soundproof 10 rehearsal rooms



Recording studio



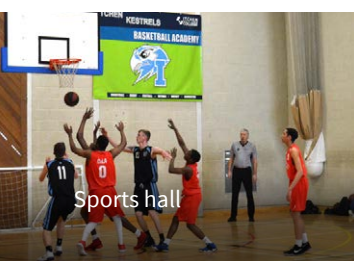
Music technology suite



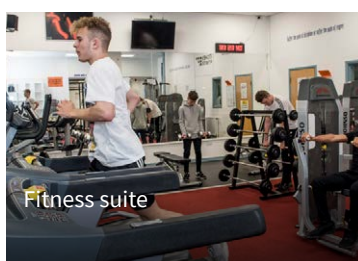
Radio station



College centre & canteen



Sports hall



Fitness suite



Football pitch



Science labs



Learning Resources Centre



Main hall with stage

High School Programme

For students who wish to improve their English and have an authentic UK High school experience, studying with British students.

For students who need accreditation for their school, we organise the full validation of school reports.

Benefits:

- ✓ You are taught by highly trained professionals.
- ✓ You are fully immersed and engaged in your studies alongside local students
- ✓ You develop key skills such as critical thinking, analytical, research and presentation skills.
- ✓ You are encouraged to develop your IT & social media skills.
- ✓ You have the opportunity to improve your university and career prospects.
- ✓ You will make new friendships with local students.
- ✓ You will improve your English and grow in confidence.
- ✓ You choose the subjects that you enjoy or need for your experience.
- ✓ You will start in September. Decide on your course length starting from one term.
- ✓ You will be part of a British family and make long term friends.
- ✓ You will be supported by our expert team who is always on hand to help you.
- ✓ You can explore the UK and enjoy a full enrichment programme.

Course Structure

English as a Foreign Language is compulsory. Students can take 3 to 4 additional subjects from a wide range of academic and vocational courses. Students choose subjects according to their level, interest or career focus. Students learn subject related themes, as well as skills, which are vital for academic success; these include critical thinking, debating skills, essay writing and how to study independently.

Assessment

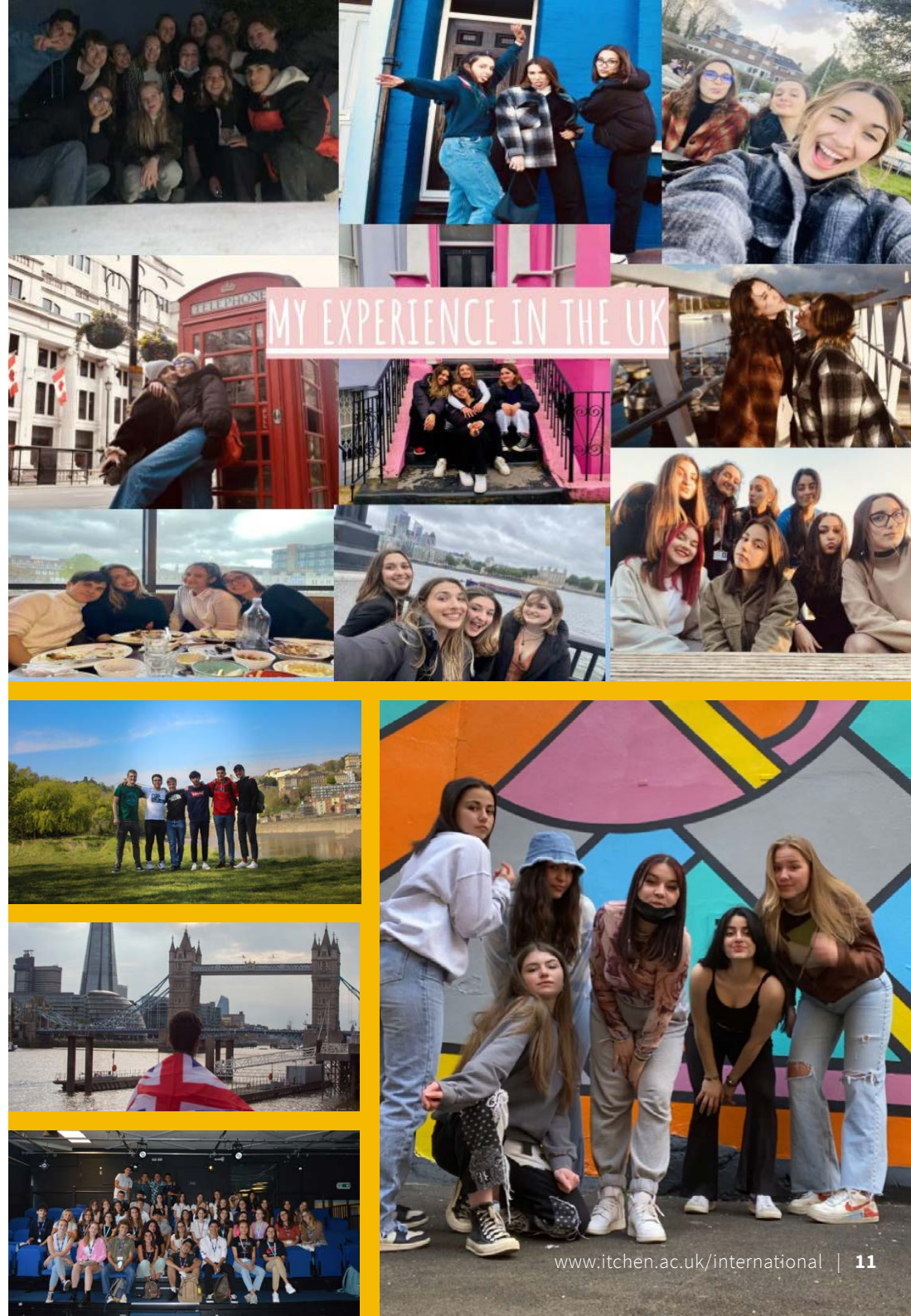
There are regular small classroom assessments and reviews to check on students' progress. Each student will be issued with an end of programme report, in which teachers and the tutor will write comments on student's attendance and performance during the programme.

Support

A personal tutor is allocated to each student at the start of the programme. The tutor is available to help with all pastoral matters and can direct students to the right teacher or Head of faculties for academic issues. There is a tutorial session each week, which is timetabled and compulsory.

Course Requirements

- **Course length:** Typically 1 term, 1 semester or 6 months
- **Start date:** September.
- **Number of hours of study:** 18-22 hours per week
- **Course Level:** A level, Level 3 Vocational, Level 2
- **Entry requirement:** English level equivalent to B1 (CEFR) or IELTS 4.5/5.0 but no formal qualification required. English level and academic suitability will be assessed by Itchen College free of charge.
- **Age requirement:** 16-19 years old



A Level Courses



Our international students represent less than
8%
of the total student body.



STUDENT VOICE

Elena Bosco Colosi

From Italy
Environmental Science A level

"This experience truly changed me, and I still can't believe I did it. I'm grateful to all the people I have met, all the friends I've made and, of course, all the teachers who were all very kind and helpful. Thank you."

We are a sponsor for the points based system and are therefore licenced to welcome international students to study on A Level and one year programmes in the UK. For support with your application please contact us.

Business

A LEVEL

- Accounting
- Business
- Economics

English & Media

A LEVEL

- English Language
- English Language & Literature
- English Literature
- Film Studies
- Media Studies

Geography, Travel, Humanities & Modern Languages

A LEVEL

- Environmental Science
- French
- Geography
- Politics
- History
- Spanish

Maths, Computing & Science

A LEVEL

- Biology
- Chemistry
- Mathematics
- Mathematics & Further
- Mathematics
- Physics

Uniformed Public Services, Law & Criminology

A LEVEL

- Law

Sport & PE

A LEVEL

- Sport & PE

Social Sciences & Care

A LEVEL

- Psychology
- Sociology

Visual & Performing Arts

A LEVEL

- Fine Art
- Graphics
- Photography
- Textiles

Course Requirements

- **Course length:** 1 or 2 years
- **Start date:** September.
- **Number of hours of study:** 18-22 hours per week
- **Course Level:** A Level or Level 3 Vocational
- **Entry requirement:** IELTS for UKVI 5.5 with no band below 5.0 or equivalent UKVI approved qualification. Satisfactory past 2 years reports indicating satisfactory academic level.
- **Age requirement:** 16 or 17 years old



Level 3 Vocational Courses



We have welcomed
students from over
40
countries



STUDENT
VOICE

**Mateo San
Miguel Cabrera**

From Peru
Music Performance & Production
Level 3

“Unlike school, most days I was looking forward to go to college. The lessons and the teachers are fun and the other students are very welcoming.”

We are a sponsor for the points based system and are therefore licenced to welcome international students to study on A Level and one year programmes in the UK. For support with your application please contact us.

Business

LEVEL 3 VOCATIONAL COURSES

- Business - Single Award
- Business - Double Award

English & Media

LEVEL 3 VOCATIONAL COURSES

- Creative Writing Extended
- Project Qualification
- Digital Media
- Journalism

Geography, Travel, Humanities & Modern Languages

LEVEL 3 VOCATIONAL COURSES

- Tourism
- Travel & Tourism - Triple Award

Maths, Computing & Science

LEVEL 3 VOCATIONAL COURSES

- IT
- IT (Application Developer)
- Core Mathematics
- (Mathematics in Context)

Uniformed Public Services, Law & Criminology

LEVEL 3 VOCATIONAL COURSES

- Applied Law
- Criminology
- Protective Services

Sport & PE

LEVEL 3 VOCATIONAL COURSES

- Sport - Triple Award
- Football Coaching Diploma

Social Sciences & Care

LEVEL 3 VOCATIONAL COURSES

- Childcare & Education - Full Time With Placement
- Health & Social Care - Triple Award

Visual & Performing Arts

LEVEL 3 VOCATIONAL COURSES

- Art & Design
- Life Drawing
- Acting
- Dance & Musical Theatre - Triple Award
- Music Performance & Technology - Triple Award

Course Requirements

- **Course length:** 1 or 2 years
- **Start date:** September.
- **Number of hours of study:** 18-22 hours per week
- **Course Level:** A Level or Level 3 Vocational
- **Entry requirement:** IELTS for UKVI 5.5 with no band below 5.0 or equivalent UKVI approved qualification. Satisfactory past 2 years reports indicating satisfactory academic level.
- **Age requirement:** 16 or 17 years old



+ Supplementary Courses



Add additional skills and experiences to your programmes.

LEVEL 2 VOCATIONAL COURSES

- + Art & Design
- + Business
- + Business Technology
- + Community Sports
- + Leadership Award - CSLA
- + Criminology
- + Fitness Instructor
- + Football Coaching Diploma
- + Introduction to Cabin Crew
- + IT
- + Law & Legal Work
- + Life Drawing
- + Media
- + Sport
- + Teamwork and Personal
- + Development in the Community
- + Travel & Tourism

We also offer a range of additional Level 2 subjects that can fit alongside your Level 3 programme.

These supplement your core subjects and provide you with extra skills and experiences that will look good on your university application.



STUDENT
VOICE

Lewis Timms

From France
Public Services Level 3

"I found the right course for me and it has opened so many opportunities for my future. I had the pleasure to meet some amazing people and made friends for life."



English as a Foreign Language

Accredited by the
BRITISH COUNCIL
for the teaching
of English in the UK

Studying English at Itchen Sixth Form College is one of the best investments you can make for your future. We offer various levels from pre-intermediate to advance which includes:

- ✓ IELTS-required for entry to British universities for undergraduate and postgraduate courses.
- ✓ ESOL (skills for Life)- a general English language course recognised by employers in the UK.

Itchen provides a vibrant learning environment, with up-to-date resources and highly qualified teachers.

We are proud to be accredited by the British Council for the teaching of English.

Course Requirements:

- **Course length:** Typically 1 term, 1 semester or 6 months
- **Start date:** September. Other flexible start dates may be available.
- **Number of hours of study:** 4.5-11 hours per week
- **Class size:** Maximum 25
- **Entry requirement:** English level equivalent to B1 (CEFR) or IELTS 4.5/5.0 but no formal qualification required. English level and academic suitability will be assessed by Itchen College free of charge.
- **Age requirement:** 16-19 years old
- **Learning environment:** ESOL classes are taught in dedicated groups with only international students. Lessons take place in college and students have full access to the college's library and various quiet spaces for independent study.
- **Contact us:** For our latest prices.

Study Tours

(8 days - 6 weeks)

For groups looking for the perfect programme to taste life and study in the UK, combine English and A-level lessons, and visit the UK's most famous sights and sessions in sport, golf, music, art, and drama. We can tailor-make a programme to suit you at a time that suits you.

For the last 25 years, we have been welcoming groups of students worldwide and building their perfect programmes. So if you have a special request, it couldn't be easier, tell us what you would like!

Study

English lessons at all levels and sample A Level lessons from a wide range of subjects and from highly qualified and experienced teachers.

Stay

We arrange accommodation with friendly, local homestay hosts. All the host families are DBS checked and all properties inspected to ensure a friendly and relaxing home environment.

Visit

We organise guided tour and excursions to many of the top attractions such as London, Oxford, Bath, Stonehenge, Harry Potter Studios, etc...

Experience

Experience a full programme with activities in college such as sports, photography, art, music, with the option to perform.

We include:

- ✓ Airport transfers and transportation during your stay
- ✓ Free places for group leaders with option to exchange teaching ideas with our teachers
- ✓ Entry fees to all visits and attractions



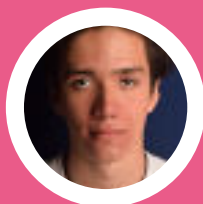
Course Requirements

- **Programme length:** 8 days to 6 weeks.
- **Start date:** Flexible start dates. Please contact us.
- **Number of hours of study:** Minimum 16 hours of tuition a week
- **Group size:** Minimum 10
- **Entry requirement:** None. English level and academic suitability will be assessed by Itchen College free of charge.
- **Age requirement:** 14-18 years old, in separate groups
- **Visa requirement:** Please contact us for more information
- **Learning environment:** ESOL classes are taught in dedicated groups with only international students. Lessons take place in college and students have full access to the college's library and various quiet spaces for independent study.



Francesco Raneri,
From Italy

"Constant use of English helps me practice my speaking and pronunciation, frequent tests allow me to challenge myself and regularly check on my progress."



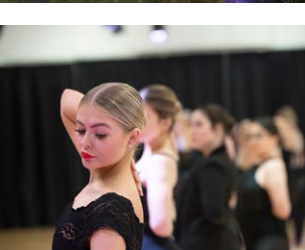
Alvaro Figueredo Vega,
From Venezuela

"The classes are really helpful for improving my academic writing and speaking. The teachers give you feedback on most activities."



Giulia Licenziato,
From Italy

"I found an incredible welcoming and fair environment since the early beginning of my experience at Itchen College."



Our Academies

Being a part of our academies here at Itchen provides you with many extra opportunities and extra-curricular experiences, as well as the chance to make new friends, be active in the community and really take your Itchen experience to the next level.

Creative Arts Academy

The Creative Arts Academy is for you if you want to...

- study subjects in the Visual and Performing Arts faculty
- study subjects in the English and Media faculty
- build your portfolio
- undertake work experience
- work with creative institutions
- attend workshops and guest lectures



Academy of Sport

The Academy of Sport is for you if you want to...

- receive expert coaching in a range of sports
- include sport sessions in your college timetable
- meet top sportsmen and women from across the UK and abroad

Our Academy of Sport offers free expert coaching in a range of sports, including:

- Athletics
- Badminton
- Basketball (men and women)
- Football (men and women)
- Golf (men and women)
- Netball
- Rugby

Support

Living and studying abroad offers an exciting opportunity to develop time management and life skills necessary for university and career success. We offer all the support you need from the moment you apply.

Support with your application

- ✓ We give expert advice on the best subjects to take for your career choice or general aspirations
- ✓ We have dedicated staff to guide you through the application process

Support getting here

- ✓ We meet you at the airport and take you to your accommodation

See our website for free airport transfer day.

Support settling in

- ✓ We help you if you need to open a bank account or register with a doctor, and give you practical help with day-to-day living
- ✓ We organise a programme of trips and social activities to help you get to know other students, the local area and the UK's top sights

Day-to-day support

- ✓ An International Student Support team always ready to help
- ✓ Emergency support available 24 hours a day, 7 days a week
- ✓ A Personal Tutor to help you with academic and pastoral questions
- ✓ Mentoring and counselling service available for everyone.



Home Stay Families

A great way to improve your English and get to know the British way of life is to live with a local family. We know all our Homestay hosts personally and take great care to find the best family for you. Your Homestay hosts will make you feel welcome, will help you settle in and will treat you as one of the family.

- ✓ Our team finds you suitable, safe accommodation with a police-checked local family, and is available to support you throughout the year
- ✓ We visit our Homestay hosts regularly to ensure your safety and comfort
- ✓ All rooms have a single bed, desk and wardrobe as well as Wi-Fi access. You will share the kitchen and bathroom and will have your laundry done for you or you will have use of the washing machine
- ✓ We offer half-board with breakfast and evening meal Monday to Friday and full-board at weekends, which includes breakfast, lunch and evening meal.
- ✓ 90% of our international students live within a 30-minute walk of the college
- ✓ 100% of our homestay hosts undergo a DBS (Disclosure and Barring Service), which is an enhanced police check.

“Living in Homestay is a great opportunity for students to stay safe and be given additional support if they need it. It gives them a real insight into what it’s like living with a local family.”



Enrichment

As part of your educational experience, we organise a full programme of cultural trips and social events.

We continually update and improve our social programme, but typical activities can include:

- ✓ Celebration of different festivals such as Christmas, Chinese New Year and Easter
- ✓ Tours of the local area and Southampton
- ✓ Visit to London
- ✓ Visit to Bath and Stonehenge
- ✓ Visit to the New Forest with traditional cream tea
- ✓ Trip to the Isle of Wight and Carisbrooke Castle
- ✓ Trip to Thorpe Park or Chessington World of Adventures
- ✓ Trip to Warner Bros. Studios Tour — The Making of Harry Potter
- ✓ Trip to Winchester and Portsmouth with a chance to visit Spinnaker Tower.
- ✓ Dedicated use of our Sports Centre for basketball, table tennis, football and badminton

Clubs and societies

Itchen offers a variety of clubs such as:

- ✓ Itchen Radio
- ✓ Itchen Student Union (ISU)
- ✓ Prism (LGBTQ+ group)
- ✓ Bands, music and singing groups
- ✓ Climbing club
- ✓ Itchen Christian Union
- ✓ Creative writing club
- ✓ Dance groups
- ✓ Fitness and sports clubs

Please see our website for this year's programme.



Application Timeline

1

Apply online for your course or...

Download, complete and send in your signed application form. We accept applications from all over the world to start in January or September.

2

Interview

Depending on your chosen subjects, you may need an interview. Confirmation of an interview will be given along with any other useful information. Interviews can be done online via Skype, WhatsApp, Zoom etc...

3

Application outcome

You will receive an offer of a place to study at Itchen Sixth Form College once your application has been processed.

4

Accepting your offer

Once we have made you an offer, accept it as soon as possible and send us your deposit payment, so we can start the process of matching you with a host family.

5

Accommodation

We will give you information on your host family, as well as further information about living in the UK. Your host family will be a local family in Southampton.

6

Meet and greet

We will pick you up from the airport and introduce you to your host family once we arrive at the college. Meet and greet dates will be on our website.

7

Arrival and enrolment

You will be enrolled on your chosen subjects and will meet other UK and international students during your induction days.

8

Start of your Itchen journey

During Welcome Week, you will attend trips and activities. Once college starts, the international team will continue to offer you support.

International Success

1. Argentina	17. Latvia
2. Belgium	18. Macau
3. Brazil	19. Nigeria
4. Chile	20. Norway
5. China	21. Saudi Arabia
6. Czech Republic	22. Slovakia
7. Denmark	23. South Korea
8. France	24. Spain
9. Germany	25. Sweden
10. Gibraltar	26. Switzerland
11. Netherlands	27. Turkmenistan
12. Hong Kong	28. USA
13. Hungary	29. Uzbekistan
14. Indonesia	30. Venezuela
15. Italy	31. Vietnam
16. India	32. Peru

Students travel from all over the world to study at Itchen.
We look forward to meeting you!

26 | international@itchen.ac.uk

www.itchen.ac.uk/international | 27

1. Argentina
2. Belgium
3. Brazil
4. Chile
5. China
6. Czech Republic
7. Denmark
8. France
9. Germany
10. Gibraltar
11. Netherlands
12. Hong Kong
13. Hungary
14. Indonesia
15. Italy
16. India
17. Latvia
18. Macau
19. Nigeria
20. Norway
21. Saudi Arabia
22. Slovakia
23. South Korea
24. Spain
25. Sweden
26. Switzerland
27. Turkmenistan
28. USA
29. Uzbekistan
30. Venezuela
31. Vietnam
32. Peru

**Students travel from all over
the world to study at Itchen.**
We look forward to meeting you!



College Address

Itchen Sixth Form College
Middle Road, Bitterne
Southampton, Hampshire
United Kingdom SO19 7TB

International Enquiries

T: +44 (0) 23 8043 5636

E: international@itchen.ac.uk

W: www.itchen.ac.uk/international



Accredited by the



for the teaching
of English in the UK

Follow us



APPLICATION FORM

Please complete this form in **BLOCK CAPITALS**. If you answer 'Yes' to any question, please provide the details in the area specified for that section. Please **tick boxes** where appropriate.

PERSONAL DETAILS

Surname/Family Name	<input type="text"/>	First Name (s)	<input type="text"/>
Nationality	<input type="text"/>		
Email	<input type="text"/>	Mobile	<input type="text"/>
Country of Birth	<input type="text"/>		
Government Who Issued Passport	<input type="text"/>		
Passport Number	<input type="text"/>	Passport Expiry Date	<input type="text"/>
Gender:	Male <input type="checkbox"/>	Female <input type="checkbox"/>	Other <input type="text"/>
Date of Birth	<input type="text"/>	Age on 1st September	<input type="text"/>
Do you have any medical conditions?	Yes <input type="checkbox"/>	No <input type="checkbox"/>	Do you have any learning difficulties? Yes <input type="checkbox"/> No <input type="checkbox"/>
If you answer 'Yes', to either question, please give details			
<input type="text"/>			

STUDENT PARENT / GUARDIAN CONTACT DETAILS

Surname/ Family Name	<input type="text"/>	First Name (s)	<input type="text"/>
Address	<input type="text"/>		
Country	<input type="text"/>	Postcode	<input type="text"/>
Email	<input type="text"/>	Mobile	<input type="text"/>

EDUCATION

Please provide copies of your academic reports to support your application.

Current school name and address:	<input type="text"/>		
Current school year:	<input type="text"/>		
Course choice (please tick one)	Pre-A Level IELTS preparation programme (6 months) <input type="checkbox"/>	High School Programme <input type="checkbox"/>	
	2 Year A Level Programme <input type="checkbox"/>	1 Year AS Level Programme <input type="checkbox"/>	
Length of Programme	Autumn Term <input type="checkbox"/>	Semester <input type="checkbox"/>	6 months <input type="checkbox"/>

EDUCATION CONTINUED...

Subject interest

5 choices in order of interest

Degree/Career interest

Payment of fees

Fees are paid by bank draft or bank transfer.

Who is paying for your fees?

Parents / Guardians

☐

Government sponsored

☐

Other (Please specify)

VISA SECTION

Have you previously studied in the UK?

Yes

☐

No

☐

Have you previously had a Student Visa?

Yes

☐

No

☐

Have you ever been refused a visa to travel to the UK or any other country?

Yes

☐

No

☐

If you answer 'Yes', to any question, please give details. You must also provide copies of all visas and passport stamps, and any relevant documentation.

CRIMINAL CONVICTIONS

Have you ever been convicted of any criminal activity?

Yes

☐

No

☐

If you answered 'Yes', please give details and date(s) of the convictions(s)

SIGNATURE

I confirm this is a completed application form and it is accurate. Permission is given to the College to contact the UK Home Office on the student's behalf should we deem it necessary.

I understand it is the student's responsibility to obtain the correct immigration permission before travelling to the UK (if necessary).

Student applicant signature

Date

Parent / Guardian signature

Date

After you have received an offer to study, we will provide you a Homestay questionnaire which will assist us in placing you with one of our police-checked local UK Homestay hosts. Please give your completed form and supporting documents to your agent or to the College as appropriate.

Please tick if you have included:

A scan of your passport

☐

A scan of your latest school report

☐

A passport size photo

☐