

Studio 
Cambridge



70
YEARS
1954 - 2024

English Language
Courses for Adults
in Cambridge

studiocambridge.co.uk

Why Choose Studio Cambridge?

INDEPENDENT

All of our central services – Accommodation, Welfare, Activities, Academic Support, Sales and Senior Management – are based at our main school in Cambridge.

In this way, we all get to meet and to know our students and are able to respond quickly to queries without needing to contact “head office”.

BIG BUT FRIENDLY

Although we are not a small school, we treat our students as individual people. We have 16 classrooms and a capacity of approximately 180 students, so we can teach at all levels from beginner to advanced.

EXPERIENCE AND REPUTATION

One of the longest-established English language schools in Britain, we have been part of Cambridge's education scene since 1954.

EFFECTIVE TEACHING

A proven curriculum taught by qualified teachers.

SPECIALISED COURSES

A range of intensive courses with specialised options, including examination courses, for adult students and teenagers aged 16+ years.

PERSONAL CARE

24-hour Studio Cambridge emergency telephone number and welfare staff.

CHOICE OF ACCOMMODATION

Choose to live with a local family or in a student residence: they are all carefully inspected by us.

SUPERB LOCATION IN CAMBRIDGE

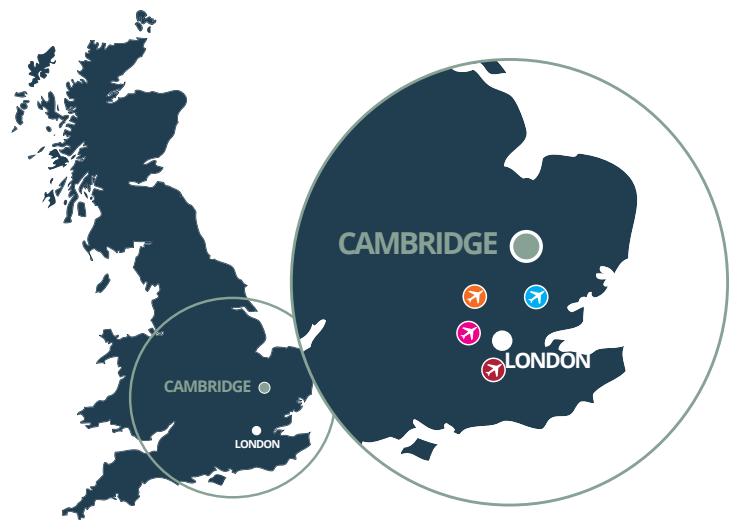
Our main school is open year round in central Cambridge.

CLASSMATES FROM AROUND THE WORLD

We welcome students from over 65 countries each year.

Our mission is to bring together people from around the world to learn English in England and to encourage intellectual curiosity, cultural awareness and tolerance in all that we do.

We aim to provide a safe, welcoming environment in which our students can improve their English language skills and gain insight into British life, culture and heritage, both inside and outside of the classroom.



Memberships and Accreditations

Studio Cambridge is part of the Full Circle Education Group of Schools, which also include St Bees Cumbria, Our World English Schools and Adventurous Global Schools.



Studio Cambridge is inspected and accredited by, or a member of, the following organisations:



Cambridge



THE CITY OF CAMBRIDGE

Our city is known throughout the world for its mediaeval university colleges, impressive architecture, the peaceful River Cam, and its green parks and gardens. With its historic buildings and beautiful setting, the city of Cambridge is the ideal place in which to learn English.

Cambridge has a long tradition, but the university is a centre of exciting and innovative scientific research, with key local companies such as Microsoft, Apple and ARM based here. With a population of around 125,000 residents and 20,000 university students, Cambridge is an exciting place in which to live and study. It is small enough to get around easily on foot or by bicycle, but big enough to have all the shops, restaurants, cinemas, theatres, clubs, museums, galleries and sporting facilities that you need.

Of course, if you want to visit a really big city, London is just 50 minutes away by train.

Our main school is just 15 minutes' walk from Cambridge's historic centre, and our summer school is 20 minutes' walk away.



CAMBRIDGE'S UNMISSABLE ATTRACTIONS

Cambridge has so many beautiful buildings, green parks, open spaces, museums and attractions, it is difficult to name them all, but here is a sample of things not to be missed.

- Punting on the River Cam
- The many stunning Cambridge University colleges such as King's, Trinity, Jesus and St John's College
- Fitzwilliam Museum & Gallery
- The University Botanic Garden
- Traditional English afternoon tea in Grantchester Meadows



CITY FESTIVALS

Cambridge is famous for its many festivals held throughout the year, some of which are the oldest or biggest in the UK. The city hosts excellent annual festivals of science, history, beer, music (Folk, Classical, Rock & "Pop in the Park"), film, literature and Shakespeare.



OTHER CAMBRIDGE PLACES OF INTEREST

- Centre of Computing History
- Great St Mary's Tower
- King's College Chapel & Choir
- Anthropology & Archaeology Museum
- The Polar Museum
- Geology and Zoology Museum
- Whipple History of Science Museum
- Kettles Yard Art Gallery
- Cambridge Museum
- Museum of Technology
- Castle Hill Mound
- The Bridge of Sighs
- Mathematical Bridge
- The Wren Library
- The Eagle Pub
- The Corpus "Grasshopper" Clock
- Parker's Piece Football Monument

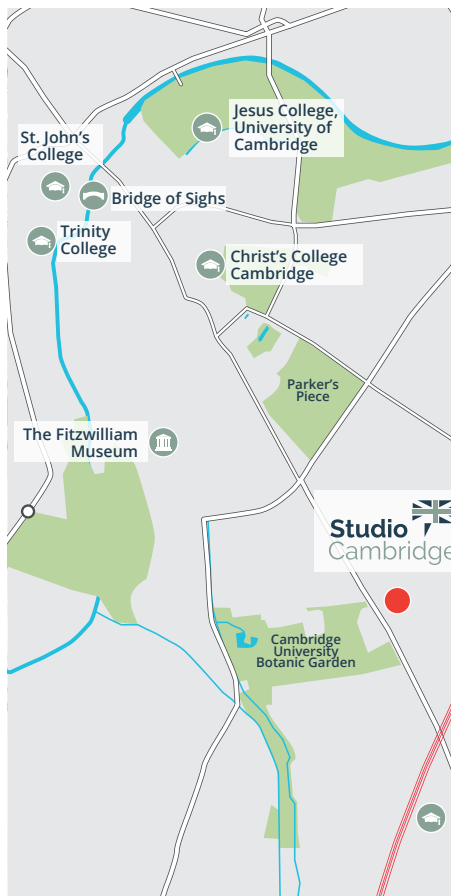
Our Facilities



STUDIO MAIN SCHOOL

Our main school is open year-round.

It is located in an impressive 19th century building belonging to Cambridge University. It is within easy walking distance to the centre of Cambridge and the main railway station, from where there are frequent direct train services to London.



Facilities at main school include:

16 classrooms

Self-study library

Director of Studies Office for help and advice with academic work

Accommodation Department. We arrange all homestay and residential accommodation ourselves

Student Services Department for welfare, activities and excursions

Cafe for hot or cold lunches, snacks, drinks*

Garden

The school is just 15 minutes' walk from Cambridge's historic centre



ACCESSIBILITY FOR STUDENTS

Our main school in Cambridge is in a building over 100 years old, with four floors and no lifts. We unfortunately, therefore, have limited facilities for people using wheelchairs.

Please let us know before you enrol if you have any special needs. We will be able to advise you on the suitability of our schools, courses, activities and accommodation for your particular requirements.

OUR FACILITY PROVIDERS

We have been offering our courses on the campuses of colleges for many years. However, these institutions are not responsible for our courses. Studio Cambridge is solely responsible for the design and management of these programmes, which are accredited by the appropriate government-recognised organisations.

*Cafe lunches are not available in December

Studio Cambridge Students



STUDENT NATIONALITIES

Students come to Studio Cambridge from over 65 countries per year and speak dozens of languages.

The average age of students taking our courses is 22 years. 15% are aged under 18, 70% aged 18-29, 15% aged 30+

The mix of nationalities changes from year to year and according to the time of year. However, here are the typical nationalities of our adult students taking intensive courses:

Western Europe	43%
Asia / Far East	20%
Eastern Europe	15%
Latin America	10%
Middle East	9%
Africa	3%

AIRPORT TRANSFERS

Cambridge is very easily reached from all of London's airports by bus, train or taxi. Transfers are not included (except on our "Camps") but can be arranged for you by us at additional cost. We will send you full information when you enrol. The distance to Cambridge is:

London Heathrow	113 km
London Stansted	47 km
London Gatwick	150 km

STUDIO SUMMER CAMPS FOR AGES 9 TO 17

Studio Cambridge runs 4 summer camps for different age groups, including 3 summer camps in Cambridge. Please see our "English Language Camps" brochure for details.

A PROVEN HISTORY

We have been running English language camps for many, many years. Our "newest" camp started 16 years ago and our oldest has been running for over 56 years.

The camps are run at our own school in Cambridge, at Cambridge University colleges, and in Ely, at one of the best boarding schools that England has to offer.

DESIGNED FOR DIFFERENT AGES

Each of our English Camps is intended for a specific age group. The academic, social and sports content, the accommodation, and the level of welfare and supervision, are carefully designed according to the age of the camp participants.

ACTIVITIES

All our camps feature a variety of activities, in addition to the English language lessons. The programmes are busy - ensuring that there is always lots to do.

Activities include sports, arts and crafts, local visits, language games and parties.

Studio Cambridge Activities



ACTIVITIES

To take full advantage of living and studying with us here in the UK, you should continue to speak English after your classes are finished for the day. This will help you to learn as much as you can about our way of life, the food we eat, the festivals we celebrate and the sports we play.

Join in with the activities and you will find yourself using the English you have learned in the classroom.

Our courses EFL-20, EFL-28 and CE-28 all offer two afternoon activities each week, either free of charge or at cost.

We have some other clever ways of keeping you talking.

For example:

Studio "missions"

We set missions for you, with the goal of finding out information and encouraging you to practise your conversation skills around the city. Studio missions are fun, out-of-school assignments, which help you to explore Cambridge while practising and improving your English - for example, visiting Cambridge University colleges, reviewing a local restaurant or attending a local football match. You will receive a special certificate for each mission you complete, but the real reward will be making use of your free time to learn more about this great city.

FROM CAMBRIDGE TO LONDON AND EUROPE

Trains depart Cambridge for London every 15 minutes. Since the journey takes as little as 50 minutes, London is easy to visit for a day's sightseeing, serious shopping or to visit the theatre or attend a concert.

There are also direct trains from Cambridge to the Eurostar at St Pancras Station and London's Stansted Airport, which offers cheap flights to 30 countries in Europe and other continents.

It is easy to travel independently from Cambridge by train or coach to all destinations in the UK. There is direct transport to London, Birmingham, the seaside, and all of the London airports.

During the weekend, student excursions can be booked at Studio to destinations such as London, Windsor Castle, Stratford-upon-Avon, Oxford, York, Bath, Canterbury, Warwick Castle and Stonehenge.

These are all at extra cost. A full-day excursion to London, for example, costs approximately £45. Some excursions are available exclusively to students aged 18 years or more.

Studio Cambridge Welfare



YOUR WELFARE

Your well-being, comfort and safety are our most important responsibility and we take it seriously.

For students of all ages:

1. We have experienced and trained welfare staff.
2. You will be given a 24-hour emergency telephone number to contact Studio Cambridge staff at any time.

For students under 18 years of age:

We pay particular attention to the welfare of students aged under 18 years attending our English courses and Sir George Camp.

1. You will have a dedicated Head of Pastoral Care who is concerned specifically with your well-being.
2. As a homestay student aged under 18, you must be home in the evening earlier than over 18s. Your hosts or welfare team will ensure that this rule is followed.
3. You will need to travel independently between the school and your accommodation (by bus, bicycle or on foot).
4. You will have some unsupervised free time outside of classes and activities every day, and a free schedule at weekends.
5. You may only take our intensive courses with a minimum of 28 lessons. The morning-only option (EFL-20) is not available to under 18s.
6. You must be in school to attend your first lesson each day.
7. Your transfer arrangements, from or to the airport, must be made in communication with us. We will arrange these transfers for you unless we have written assurance from your parents to say that suitable alternative arrangements have been made.
8. Due to these additional measures for students under 18, the Registration Fee* for our EFL-28 and CE-28 courses is higher than it is for students aged 18+. Please see our "Dates and Fees" list.

*There is no additional fee for registration on any of our camps.

Homestay Accommodation

THERE ARE THREE TYPES OF HOMESTAY ACCOMMODATION:



B&B

Good, clean accommodation in Cambridge with breakfast included



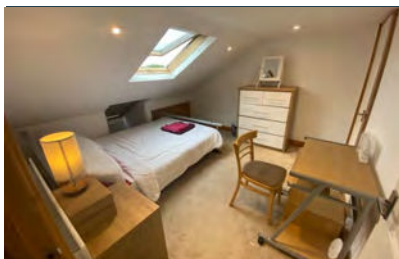
Standard

Good, clean accommodation in Cambridge with breakfast and dinner included



Superior

Higher-standard accommodation in Cambridge, typically providing a bathroom for your private use. Breakfast and dinner included. (Available exclusively to students aged 18+)



"My hosts are incredible. The house is always clean and warm – it is really nice to go back every day, practise speaking English and share a tasty dinner."

Alex, Chile



"My time in the homestay has been excellent. It is a unique experience and I feel lucky to have my host mother here. We talk about every topic and the family is very friendly."

Martina, Uruguay

HOMESTAYS - LIVING WITH LOCAL PEOPLE

Living with a host family in their private home - a homestay - is the best way to practise English in a relaxed and social environment outside of classes.

All our hosts are known to us personally and we inspect all of them at least once a year. They provide a friendly environment, a clean and comfortable bedroom, good food, and a quiet place for study.

Homestays are located less than 40 minutes from school on foot, by bicycle or using the frequent bus services. Our hosts are typical of British and Cambridge society as a whole, with different ages and occupations, and from a variety of ethnic and cultural backgrounds.

If we place another student in your homestay, he or she will not be a native speaker of your language, so communication will be in English.

YOUR BEDROOM, LAUNDRY AND MEALS

You will have your own private (single) room. Shared rooms are provided for Sir George camp students and are available for couples

Your clothes will be washed once per week

Your bed linen and towels will be changed once per week

Your homestay hosts will provide you with 16 meals per week: Breakfast and dinner every day; and Lunch on Saturdays and Sundays

Lunch is available in the school cafe every day from Monday to Friday

Residential Accommodation

SUMMER AT CB1

RESIDENTIAL ACCOMMODATION FOR AGES 18+

AVAILABLE 30 JUNE - 25 AUGUST 2024

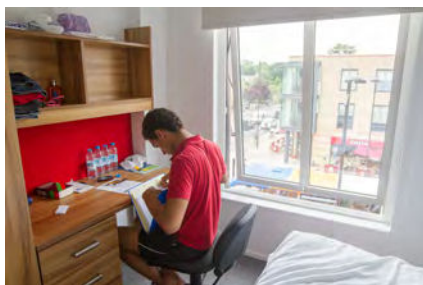
During the summer, if you are aged 18 years or more, you may choose accommodation in a residence. This will give you more privacy and independence than a homestay. Our residences are modern, purpose-built student apartment complexes. They have a high standard of facilities and a young, lively international atmosphere.

- 5-10 minutes' walk from Studio Cambridge main school
- A few minutes' walk to the Cambridge Leisure Park offering a cinema, bowling alley, shops, bars and restaurants
- Single bedrooms with private shower and toilet
- Well-equipped shared kitchen and dining area or studio room with kitchenette
- Bed linen provided weekly
- Laundry facilities (at extra cost)
- Room cleaning weekly
- Secure entry system and CCTV
- WiFi at no extra cost



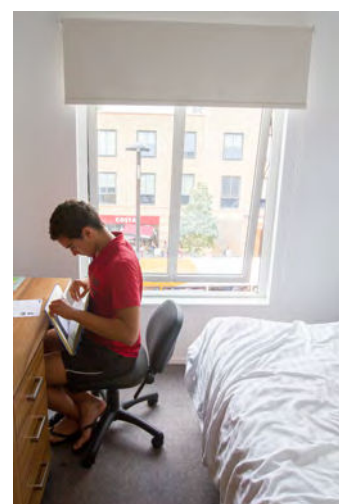
Living in a residence requires that:

- You buy and cook your own meals
- You wash your own clothes
- You clean up after yourself



"I really like living in residence - I prefer the freedom I have to go where I want. It is so close to school and I have everything I need here, with the shops and leisure park across the road."

Lizette, Netherlands



Courses at Studio Cambridge

	Standard English	Intensive English	Combination English with 1-2-1	Sir George
Ages from	18+	16+	16+	14 to 17
Course code	EFL-20	EFL-28	CE-28	Sir George
Number of lessons	20	28	28	28
Number of hours	15	21	21	21
Morning lessons	General English	General English	General English	General English
Afternoon lessons		Options of Language Skills or English for Academic Examinations	1-2-1 private tuition	English and Life Skills
Availability	Start dates every Monday year round *	Start dates every Monday year round *	Start dates every Monday year round *	Start dates every Monday except between 30 June and 25 August **
Number of activities per week	2	2	2	2
Number of afternoon guided study sessions per week	0	0	0	3
Personal tutorials	✓	✓	✓	✓
Personal study plan	✓	✓	✓	✓
Placement test	✓	✓	✓	✓
Progress test	✓	✓	✓	✓
Exit test	✓	✓	✓	✓
Certificate	✓	✓	✓	✓
Academic report	✓	✓	✓	✓
Average class size	Mornings:13	Mornings: 13 Afternoons: 12	Mornings:13 Afternoons:1	Mornings: 14 Afternoons: 10
Average age in class ***	Mornings:21	Mornings: 21 Afternoons: 22	Mornings: 21	Mornings: 16 Afternoons: 16
Average percentage of students aged 25+	Mornings:13%	Mornings: 13% Afternoons: 20%	Mornings: 13%	
Homestay	✓	✓	✓	✓
Residential aged 18+	✓	✓	✓	

* The school is closed to all courses between 23rd December 2023 and 7 January 2024 and 21 December 2024 and 5 January 2025

** Sir George closes in the summer and is replaced by the Sir Michael summer camp (see our English Language Camp brochure for details). Sir George also closes between 1 December and 5 January 2025

*** Averages are taken from 2023 and are subject to change



**EFL-28:
INTENSIVE ENGLISH**

After 20 standard morning lessons you will study a further 8 lessons per week from a choice of specialised options in the afternoons. You also receive a free tutorial each month.

**CE-28:
COMBINATION ENGLISH
WITH 1-TO-1**

After 20 standard morning lessons you will study a further 8 lessons per week with your own private teacher in the afternoons. You will also receive a free tutorial each month.

**EFL-20:
STANDARD ENGLISH**

Morning classes make up the whole 20 lessons for Standard English each week. It is ideal if you prefer to have your afternoons free. You will also receive a free tutorial each month.

**SG-28 - SIR GEORGE CAMP
FOR AGES 14 TO 17 YEARS**

During the academic year (August to June) we run our Sir George camp for teenagers at Studio main school. After 20 standard morning lessons you will study a further 8 classroom lessons per week, followed by supervised guided study or activities. You also receive a free tutorial each month.

Ages

- Ages 16 & 17 must be in class in the mornings and afternoons and therefore may not book morning-only lessons
- If you are aged 18+ years all your classmates will be at least 16 years
- At certain times of the year morning classes are also attended by "Sir George" camp students aged 14-17. At this time, if you are aged 16 or 17 years, some of your classmates may be aged 14 or 15

Levels

Students attending our Sir George camp must be elementary level or above. For all other courses we welcome students from beginner to advanced levels of English. On the rare occasion that there are not enough students to form a beginner's class, we will offer private lessons (at a reduced ratio) until a suitable class is available. See our Terms and Conditions for details.



English Lessons at Studio Cambridge

Studio Level	Skills	CEFR*	Cambridge	IELTS	TOEFL
① Beginner	No ability, except, perhaps, for a few isolated words	None	None	1.0 - 2.0	0 - 31
② Elementary	Can understand and use familiar expressions, and communicate in simple terms if the other person speaks slowly	A1	None	2.0 - 3.0	
③ Lower Intermediate	Can take part in simple exchanges in everyday life with a sympathetic native speaker	A2	Key KET	3.0 - 4.0	
④ Intermediate	Can understand main ideas of texts, discuss past and future projects and understand limited social conversation	B1	Preliminary PET	4.0 - 5.0	32 - 45
⑤ Upper Intermediate	Good command of English, with some inaccuracies; can understand implicit ideas in complex texts and use English effectively	B2	First FCE	5.0 - 6.5	46 - 93
⑥ Advanced	Fully operational command of English; can express ideas coherently and precisely but still missing cultural nuances	C1 C2	Advanced CAE Proficiency CPE	6.5 - 8.5	94 - 117



OUR DIRECTOR OF STUDIES

We have a team of teaching professionals, led by our Academic Manager and Director of Studies.

The most important role of the Director of Studies (DoS) is to help you succeed. You will meet Tim on your first day and you will be able to discuss your academic progress with them at any stage of your course.

The DoS is available to advise you about which courses or exams to take, help you with any problems or worries you might have or just listen to you if you feel the need to talk to somebody about your time studying with us.



Tim Essex
Director of Studies



CLASSES INCLUDE

Emphasis on speaking

Multinational classes from a range of countries

Individual attention from your teacher

Experienced teaching team

Clear, friendly and understandable lessons for students with low levels

Challenging and stimulating lessons for students with high levels

Flexibility to change class as you progress

METHODOLOGY

We adapt our teaching to the needs and learning styles of our students, following three guiding principles:

- The teaching will be balanced with practice - you will learn and practise English, with an emphasis on speaking.
- Lessons will be centred around you - you will not spend all your time listening to the teacher but will be busy using English in the classroom.
- The language we teach will be recycled - we will not allow you to forget what you have learnt.



CLASSES AT THE RIGHT LEVEL

Classes are at all levels from beginner to advanced. You will be tested before you arrive and placed in a class at the level which is right for you. You will be able to change level as you progress by discussing with your teacher and the Director of Studies.

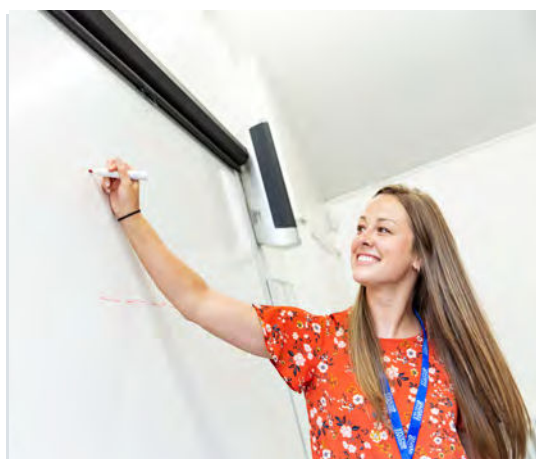
The table (page 11) shows the six main levels we use and the equivalent levels in the Cambridge Assessment Examinations, TOEFL and IELTS.

Progress test

At the end of each week you will take a test to make sure that you have understood the work covered during the week. You will be able to see your improvement.

Exit test

At the end of your course you can take an exit test. This will measure your level of English at the end of your course and, by comparing the results with those of your placement test, your overall progress. We will give you an additional certificate to show this progress.



OUR TEACHERS

Qualified

Knowledgeable

Enthusiastic

Friendly

Interested in you

STUDY LONGER FOR LESS

Our courses cost less per week the longer you study. See our Dates and Fees list for information.

Tutorials

A tutorial is a private meeting with a member of the Academic Team in which you can discuss the progress you have made and what you need to do next to reach your goals.

Your Study Plan

Based on the personal goals identified in your tutorials and your work in class, you will receive a personalised Study Plan. This will guide you to work on those areas of English which you need to focus on to improve your command of the language.

Certificate of Studies and Academic Report

At the end of your course you will receive a certificate showing the course you have studied and the dates of that course.

Your teacher will also write a personalised Academic Report which shows not just your progress but also the level you have attained in each area of English. This is a very useful document for your future studies or work.

Modern technology

Lessons regularly incorporate modern media, such as video clips, webpages, social media and the latest news, through which we can bring the English-speaking world into our classrooms.

Homework

Homework is set daily by your teacher and is designed to complement your classroom studies, helping you to retain and practise the new language from your lessons and to make faster progress. We also have some other clever ways of keeping you talking through our Studio "missions"

Studio Cambridge Course Choices

EFL-20

Morning lessons only

Our morning classes are attended by all students on Standard, Intensive, or Combination courses. All offer General English skills, with no specialisation. They consist of 20 lessons each week, typically from 09:30 to 13:00 each day, Monday to Friday. The content of the morning classes differs according to the level, interests and age of the students in each class. However, all include the study of grammar, speaking, listening, pronunciation, writing skills and reading comprehension.

CE-28 COMBINATION ENGLISH WITH 1-TO-1

Morning lessons plus afternoon 1-to-1 tuition

Each week CE-28 offers 20 morning English lessons in international classes, plus 8 afternoon lessons of 1-to-1 tuition with your own private teacher. You also receive access to the activities programme. Your 1-to-1 lessons can focus on any specific areas of grammar, skills or topic of interest to you (to be requested at the time of booking). It is the most effective way to improve your own specific areas of English while still having the advantage of mixing with other students in the morning lessons.

EFL-28 INTENSIVE

Morning lessons plus afternoon option lessons

Each week EFL-28 offers 20 morning English lessons plus 8 lessons from a choice of specialised afternoon options. The EFL-28 course is the most effective way to improve your English in the shortest possible time.



THE SCHOOL DAY TIMETABLE

Classes are held each day, Monday to Friday. A typical day is as follows:

Morning lessons

09:30 - 11:00

Two lessons (90 minutes)

11:30 - 13:00

Two lessons (90 minutes)

Afternoon lessons

(if chosen)

13:45 - 15:15

Two lessons* (90 minutes)

*On Friday afternoons there are no lessons

EFL-28 Afternoon options

EFL-28 OPTION 1 LANGUAGE SKILLS

Levels **1** **2** **3** **4** **5** **6**

1.A. FUNCTIONAL ENGLISH

Levels **1** **2** **3**

The focus is on functional English to help you communicate with the numerous people you will speak to in Cambridge, such as your host family, shop assistants and receptionists. In addition, you will learn about aspects of British and local culture. Topics include:

- Living with a host family
- Shopping
- Going out
- Ordering meals
- Buying tickets
- Filling in forms
- Etiquette and customs
- Everyday idioms
- Cambridge life
- London and the Royals
- Regional Britain
- Famous Britons
- Seasonal celebrations

1.B. COMMUNICATION SKILLS

Levels **4** **5** **6**

For students at higher English levels the focus is on enhancing communication skills. The aim is to develop students' 'receptive' skills (listening & reading) and 'productive skills' (speaking & writing). These lessons will often use authentic materials and examine (among others) the following topics:

- International communication
- Etiquette and customs
- Regional Britain
- Idiomatic English
- Pronunciation varieties
- Sport and leisure
- British history
- Cambridge life
- Seasonal celebrations
- London and the Royals
- Current affairs



EFL-28 OPTION 2 ENGLISH FOR ACADEMIC EXAMINATIONS

Levels **4** **5** **6**

This option is for students who wish to take an English language exam while at Studio or once they return home. Gaining an internationally-recognised English Language qualification is particularly useful if you are planning to study on a Foundation, Bachelor's or Master's degree course at an English-speaking university. However, this option is also suitable for students who don't need a qualification but would like a very structured and demanding course. The aim of this option is to improve your academic language skills together with your exam techniques.

This option is divided into two or three exam streams, which have some different focuses and also some common areas:

2.A. IELTS PREPARATION

Topics include:

- Delivering a short monologue
- Reacting to a difference of opinion during discussion
- The formal lexis and structures used in academic writing
- Writing reports on graphs, charts and diagrams
- Taking notes from lectures
- Identifying the writer's claims in scientific texts

2.B. CAMBRIDGE EXAM PREPARATION - B2 FIRST (FCE) AND C1 ADVANCED (CAE)

Topics include:

- Describing and comparing pictures, making suggestions and cooperative dialogue
- Use of grammar e.g. gap-fills, paraphrasing
- Use of vocabulary e.g. synonyms, affixes, phrasal verbs
- Writing letters, reports, reviews and stories
- Reading comprehension of fiction, magazines and newspapers
- Listening comprehension of news, presentations and everyday conversations

TOPICS INCLUDED IN BOTH OPTIONS:

- Delivering a short monologue
- Reacting to a difference in opinion during discussion
- Planning, organising and writing formal essays
- Syntax and word order
- Formal language and the passive voice
- Linking words – adverbs and conjugations

Sir George Camp for Ages 14 to 17



This is an intensive course available during the academic year (January to June & August to December). During the summer, students can enrol on the Sir Michael summer camp, also at our main school (see our "English Language Camps" brochure). This makes year-round study possible for students from 14 years of age.



WHY CHOOSE SIR GEORGE?

Intensive English language programme

Available in the winter, spring and autumn

At our main school with full facilities

Homestay accommodation

Designed for teenagers

Guided afternoon study sessions

Afternoon options

ENGLISH AND LIFE SKILLS FOR TEENAGERS

As well as learning English, students will discuss problems and difficult situations associated with modern life that many teenagers around the world are facing today or will face in their future. They will compare how they and their friends deal with problems and hear what their classmates do in their countries. Students will be presented with strategies and we hope that by talking them over, they will be better equipped to overcome future challenges. The areas covered are sometimes not covered in traditional education, such as:

- How to be a successful teenager
- Leadership
- Global Issues
- People from around the world
- How to survive modern life
- Relationships
- Technology and business
- Solving problems and teamwork



ENGLISH CLASSES

Classes from elementary to advanced levels

- 20 lessons (15 hours) of General English language teaching per week
- 8 lessons (6 hours) of English and life skills for teenagers
- 5 sessions of guided study or cultural activities per week
- International classes
- Average class size 10
Maximum class size 16
- All educational materials
- Placement test
- Certificate of Studies
- Academic Report

WELFARE

Sir George has a dedicated Welfare Officer who is concerned specifically with your well-being. Each evening you will be required to be home at your homestay by a set time - "curfew" - and we liaise with your host to ensure that this happens.

EXCURSIONS

Excursions are usually available for Sir George students as an option every other weekend, at additional cost. A full-day excursion to London, for example, costs approximately £45.



ACTIVITIES & GUIDED STUDY

Each week the Sir George camp typically offers 3 sessions of guided study and 2 sessions of cultural activities after your lessons. All are included in the fees.

During guided study, work is set by your teachers and there is help available from a member of staff. Its aim is to reinforce and extend what you learn during your lessons, thereby helping you make quicker progress.

Cultural activities offer a range of indoor activities or a cultural visit to a place of interest in the city - such as punting on the river Cam, King's College chapel or the Fitzwilliam museum.



AIRPORT TRANSFERS

Sir George students will be met at the airport of arrival in London by a Studio Cambridge representative on the Sunday of the start of the course. He or she will arrange your transportation to your accommodation by taxi. You will then be taken back to the airport on the Sunday at the end of your course and helped to check-in.

The cost of this Sunday service from Heathrow or Stansted airports is included in the fees. A supplement is charged for Sunday service to Gatwick, London City or Luton airports. Arrivals should be no later than 20:00 at the airport. If you plan to arrive on a different day or at a different airport please contact us. Additional fees will apply.

We must know your travel arrangements in advance. You can choose to make your own arrangements to come to Cambridge but we will need to know the details in advance.



HOMESTAY ACCOMMODATION

Living with a host family in Cambridge in their private home - a "homestay" - is a great way to practise English in a relaxed environment outside of classes. Our hosts are known to us personally and we inspect all of them regularly. They provide a friendly environment, a clean and comfortable bedroom, good food and a quiet place for study.

Homestays are normally located less than 40 minutes from school on foot, by bicycle or using the frequent bus services. Our hosts are typical of British and Cambridge society as a whole with different ages and occupations, and from a variety of ethnic and cultural backgrounds.

Bedrooms are usually shared with another Studio student of similar age and different nationality. Some singles are available. Your host will wash your clothes once per week and bed linen and towels will be provided and regularly changed.

Your homestay hosts will provide you with 16 meals per week - breakfast and dinner every day, and lunch on Saturday and Sunday. Weekday lunch is provided at school with a hot or cold option available Monday to Friday in the school café. Special dietary requirements can usually be met if requested in advance.

Is homestay accommodation right for you?

Homestay accommodation is suitable for you if you are interested in living with (and learning about life with) a local Cambridge host. You will have unsupervised free time as you are required to travel independently between the school and your accommodation, by bus, bicycle or on foot.



WHAT'S INCLUDED

Homestay accommodation

All meals, including hot weekday lunch at school

English classes

2 after-class activities per week

3 guided study sessions

Transfers from and to London's main airports

Welfare and supervision with high staff-to-students ratio

24-hour emergency telephone number



THE SCHOOL DAY TIMETABLE

Classes are held each day, Monday to Friday.
A typical day is as follows:

Morning lessons

09:30 - 11:00

Two lessons (90 minutes)

11:30 - 13:00

Two lessons (90 minutes)

Afternoon lessons

13:45 - 15:15

Two lessons* (90 minutes)

Guided study or activity

15:20 - 16:05

One session*

*There are no Friday afternoon lessons so cultural activities start from 14:00



Dates 2024




Courses start on Sunday:
between January 7 and June 28 or
August 25 and November 29

Course Duration:
1 or more weeks

70 YEARS

1954 - 2024



-  Gatwick Airport
-  Heathrow Airport
-  Luton Airport
-  Stansted Airport

Studio 
Cambridge

5 Salisbury Villas,
Station Road
Cambridge
CB1 2JF
England

Email: admissions@studiocambridge.co.uk



Accredited by the

for the teaching
of English in the UK

MEMBER


YOUNG
LEARNERS


EAST



International Association
of Language Centres

IELTS™

studiocambridge.co.uk