



SCUOLA LEONARDO DA VINCI® TURIN

THE CITY

Turin, with its 18 km of Porticos, is one of the most fascinating and mysterious cities in Italy. Its magic consists of its fusion of art, history and vanguard.

Under its layer of Savoyard austerity, there are a pulsating vivacity and vitality which not only amaze, but literally enchant the visitor: baroque buildings and futuristic architecture, antique art collections and international film exhibitions, the Egyptian Museum, which is the second most important in the world for its archaeological exhibits, and sports teams of global renown.

The tradition of Italy's first capital lives on in the old cafés and restaurants in the city centre. A complex of industries and world class higher education institutions make Turin one of the most important educational, technological and scientific centers in Italy. As the host city of 2006 Winter Olympics, the city is a perfect starting point and favorite place for winter sports lovers.

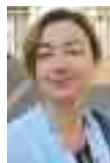
Your contact persons:



Mrs. Chiara Avidano



Mrs. Silvana Zhang



Mrs. Vera Okun



Mrs. Chiara Longato





THE SCHOOL

Located in an elegant Art Nouveau building, our school is in the exclusive 'Crocetta' residential district, just a few minutes walk from the historic center and the pedestrian zone. The area is perfectly served by public transport and the nearest underground stop (Re Umberto) is just 700 meters away. Just a few steps from the school we can find the Polytechnic of Turin University and the IED Design Academy.

- 6 classrooms (max 12 students)
- Internet Point, free time
- Free WiFi at school and in all shared apartment accommodations
- Coffee Corner



QUALITY AND RECOGNITIONS

- ASILS, AIL and Eduitalia member
- Accredited by CSN, Sweden
- Accredited by Bildungsurlaub, Germany

HOW TO GET TO TURIN

- by car: Motorway, connecting Turin with Milan, Venice, Trieste and France (Mont Blanc Tunnel, Fréjus Tunnel).
- by train: Train from Milan/Rome/Florence/Venice/France to Torino 'Porta Nuova' Railway Station.
- by plane: Flight to Turin Airport-Caselle (TRN), Shuttle to Torino 'Porta Nuova' Railway Station.

